



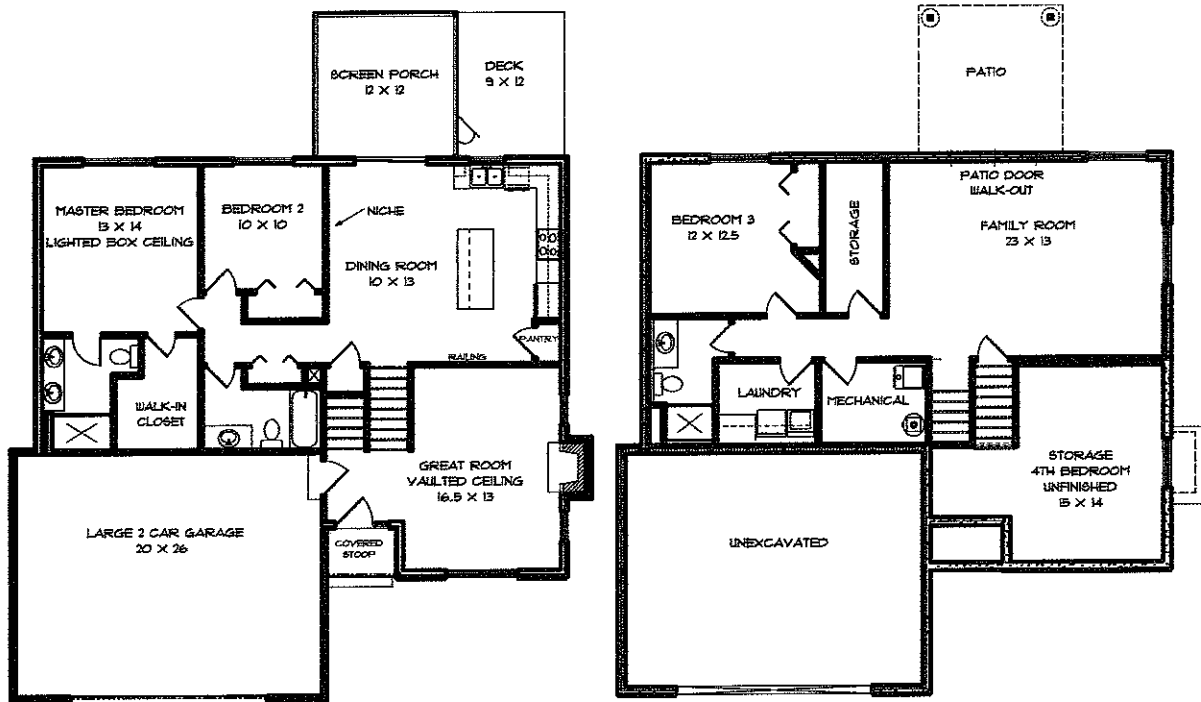
BRECKENRIDGE WALK-OUT



- HUGE FAMILY ROOM
- FULL FINISHED BASEMENT
- WALK-OUT BASEMENT
- WOODED BACK YARD
- HARDWOOD FLOORING
- AMANA APPLIANCES
- OPEN FLOOR PLAN
- LIGHTED BOX CEILING IN MSTR BDRM
- VAULTED GREAT ROOM CEILING
- WALL NICHE IN DINING ROOM
- UNFINISHED LOWER LEV 4TH BEDROOM / STORAGE
- LARGE SCREEN PORCH
- CEDAR DECK WITH VINYL RAILING
- LARGE LAUNDRY RM

3 - 4 BEDROOMS 3 FULL BATHS

MAIN LEVEL: 1224 SQ. FT.
 LOWER LEVEL: 847 SQ. FT.
 TOTAL FINISHED AREA: 2071 SQ. FT.



DESIGN ELEMENTS
 RESIDENTIAL • LIGHT COMMERCIAL DRAFTING
 319 • 631 • 4370
 CHRISTINA@GOLDERBMS.COM

FOR MORE INFORMATION PLEASE CONTACT:
 MIKE VAN DYKE - (319)248-0532 (W)
 - (319)631-2659 (CELL)

PRIME VENTURES CONSTRUCTION
 CONTACT:
 665-9200
 PRIMEVENTURESONLINE.COM

LEPIC-KROEGER REALTORS

2346 Mormon Trek Blvd. • Iowa City, IA 52246 • (319) 351-8811