

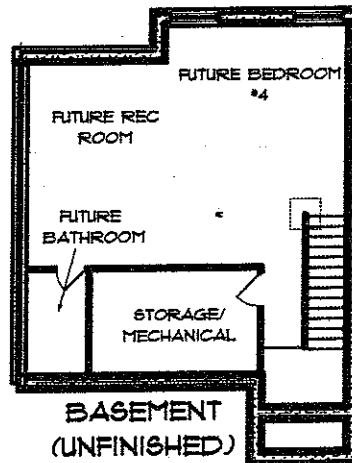
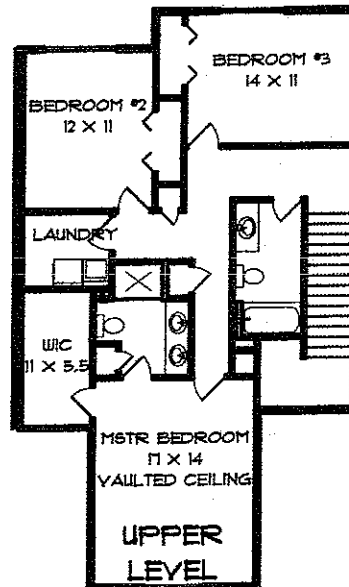
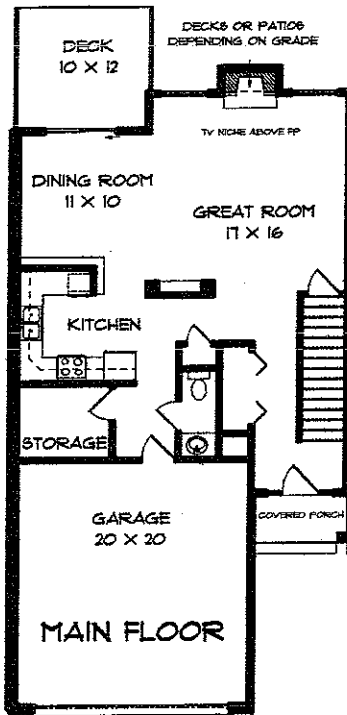
**FLINTSHIRE II
2 STORY
WITH BASEMENT**



- 2ND FLOOR LAUNDRY
- LARGE MASTER BEDROOM WITH WALK-IN-CLOSET AND A MASTER BATHROOM
- VAULTED CEILING IN MASTER BEDROOM
- LIVING ROOM WITH GAS FIREPLACE
- TV NICHE ABOVE FIREPLACE
- THREE BEDROOMS ON UPPER LEVEL
- KITCHEN BREAKFAST BAR
- LARGE TWO CAR GARAGE
- TONS OF STORAGE
- FUTURE 4TH BDRM IN BASEMENT
- CLOSE TO REC CENTER AND WATER PARK
- GREAT ACCESS TO I-380



3-4 BEDROOMS 2 1/2 BATHS
BASEMENT (UNFINISHED): 560 SQ. FT.
MAIN FLOOR: 790 SQ. FT.
UPPER FLOOR: 997 SQ. FT.
TOTAL SQ FEET: 2347 SQ. FT.



PRIME VENTURES CONSTRUCTION
 CONTACT:
 665-9200
 PRIMEVENTURESONLINE.COM

FOR MORE INFORMATION PLEASE CONTACT:

- MIKE VAN DYKE - (319)248-0532 (W)**
 - (319)631-2659 (CELL)
BILL YOUNG - (319)248-0544 (W)
 - (319)330-1046 (CELL)

LEPIC-KROEGER REALTORS

2346 Mormon Trek Blvd. • Iowa City, IA 52246 • (319) 351-8811