

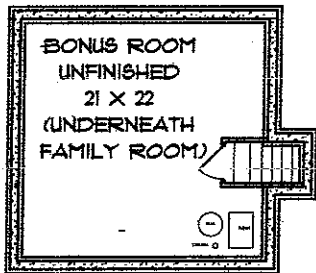

**PRIME
VENTURES**
 CONSTRUCTION



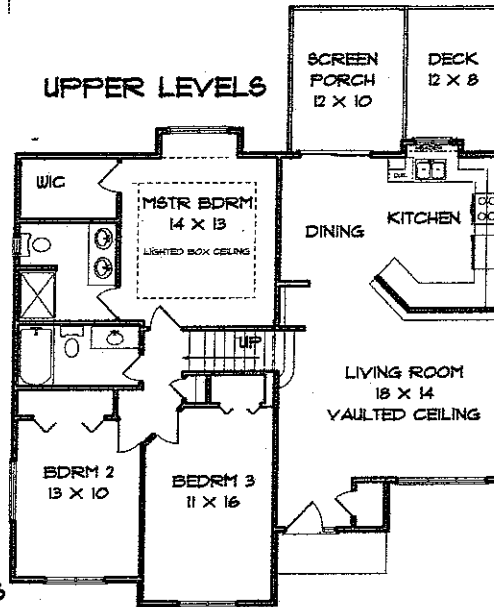
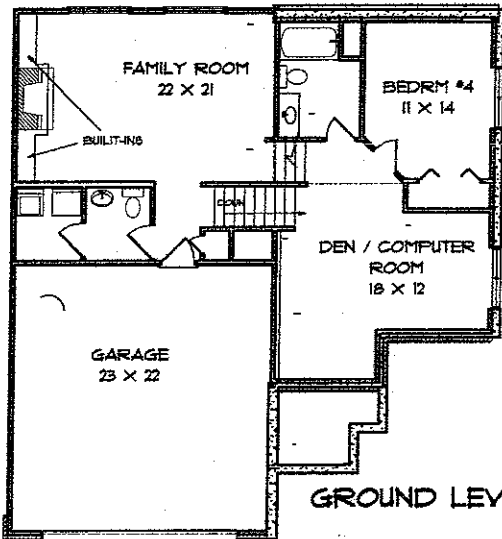
MANCHESTER II

**4 BEDROOM
MULTI LEVEL**

4 BEDROOMS 3 1/2 BATHS



BONUS ROOM:	506 SQ. FT.
GROUND LEVELS:	944 SQ. FT.
UPPER LEVELS:	801 SQ. FT.
TOTAL SQUARE FT.:	2251 SQ. FT.



FOR MORE INFORMATION PLEASE CONTACT:

**MIKE VAN DYKE - (319)248-0532 (W)
 - (319)631-2659 (CELL)**

LEPIC-KROEGER REALTORS

2346 Mormon Trek Blvd. • Iowa City, IA 52246 • (319) 351-8811

PRIME VENTURES CONSTRUCTION
 CONTACT: M:
 665-9200
 PRIMEVENTURESONLINE.COM

- LARGE FAM ROOM WITH BUILT-INS
- EXTRA BONUS ROOM
- WOODED BACK YARD
- SCREEN PORCH AND DECK
- AMANA APPLIANCES
- OPEN MAIN FLOOR PLAN
- BOXED LIGHTED CEILING MSTR BDRM
- VAULTED CEILINGS
- HARDWOOD FLOORING IN KITCHEN AND DINING ROOM
- TILE ENTRY