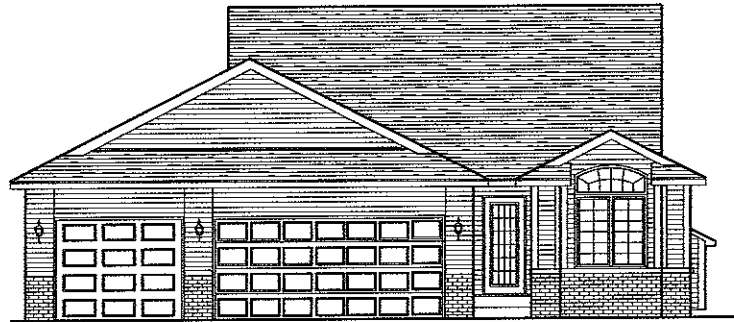




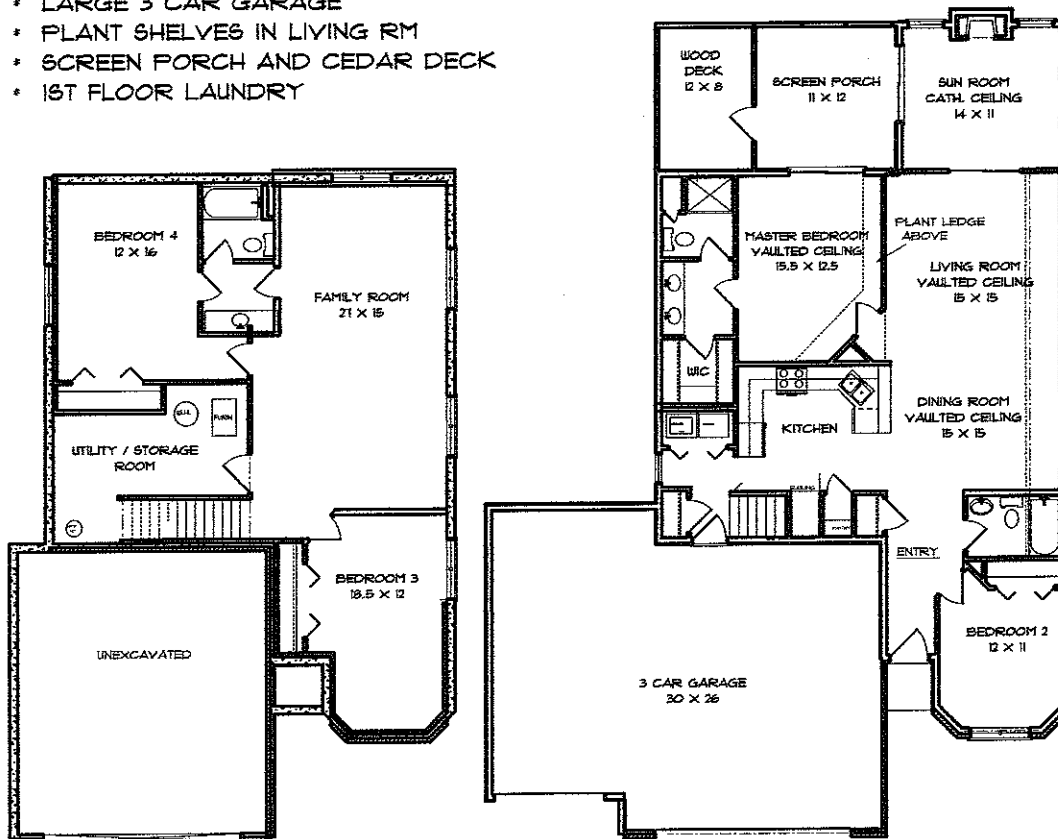
## PROVIDENCE II RANCH



- \* VAULTED CEILINGS
- \* LOTS OF NATURAL LIGHT
- \* VERY LARGE FAMILY ROOM
- \* FULL FINISHED BASEMENT
- \* HUGE BACK YARD
- \* AMANA APPLIANCES
- \* OPEN FLOOR PLAN
- \* SUN ROOM WITH FIREPLACE
- \* LARGE 3 CAR GARAGE
- \* PLANT SHELVES IN LIVING RM
- \* SCREEN PORCH AND CEDAR DECK
- \* 1ST FLOOR LAUNDRY

4 BEDROOMS 3 FULL BATHS

MAIN LEVEL: 1247 SQ. FT.  
 LOWER LEVEL: 1138 SQ. FT.  
 TOTAL FINISHED AREA: 2385 SQ. FT.



DESIGN ELEMENTS  
 RESIDENTIAL • LIGHT COMMERCIAL DRAFTING  
 319 • 634 • 4370  
 CHRISTINAMAGUIRE@MSNG.COM

FOR MORE INFORMATION PLEASE CONTACT:

MIKE VAN DYKE - (319)248-0532 (W)  
 - (319)631-2659 (CELL)

LEPIC-KROEGER REALTORS

2346 Mormon Trek Blvd. • Iowa City, IA 52246 • (319) 351-8811

PRIME VENTURES CONSTRUCTION  
 CONTACT:  
 665-3000  
 PRIMEVENTURESONLINE.COM