



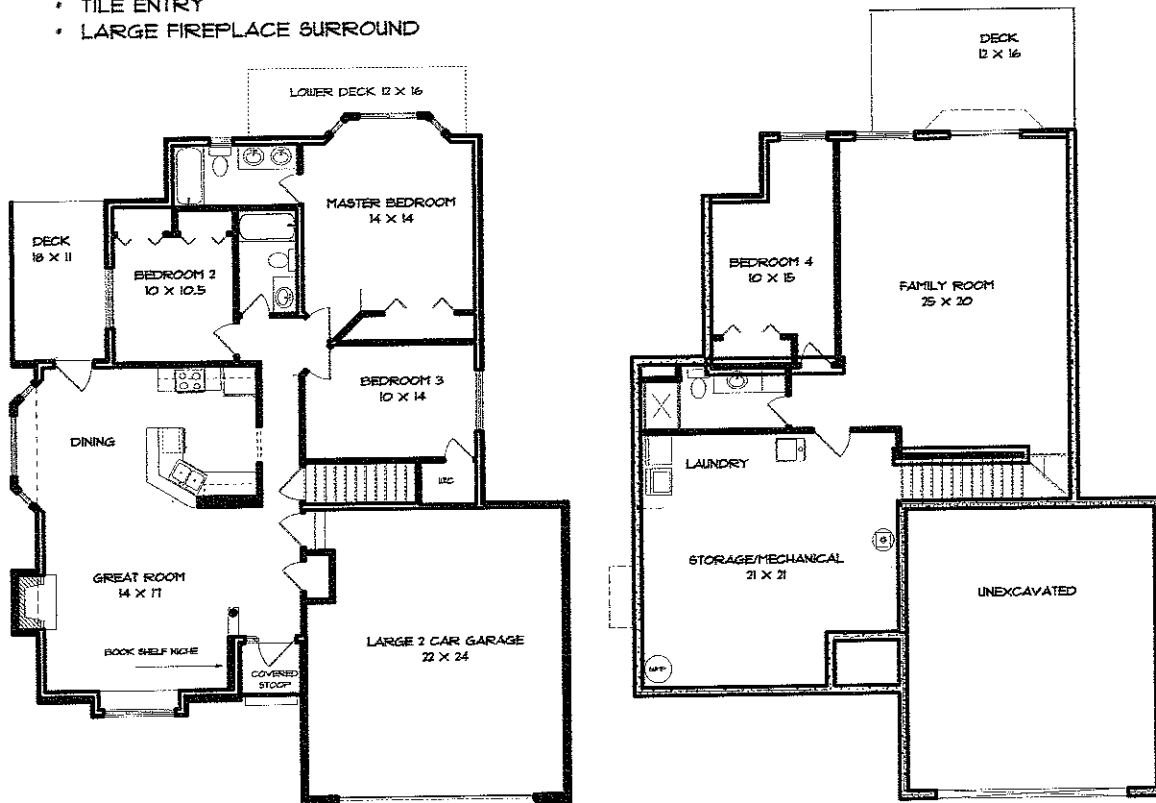
# RICHMOND



- HUGE FAMILY ROOM
- FULL FINISHED BASEMENT
- WOODED BACK YARD
- 2 LARGE DECKS
- AMANA APPLIANCES
- OPEN 1ST FLOOR PLAN
- BOXED LIGHTED CEILING MSTR BDRM
- 10' CEILING IN LIVING AND DINING ROOM
- VERY LARGE STORAGE/MECHANICAL ROOM
- LARGE LAUNDRY RM WITH DEEP SINK
- HARDWOOD FLOORING IN KITCHEN AND DINING
- TILE ENTRY
- LARGE FIREPLACE SURROUND

**4 BEDROOMS 3 FULL BATHS**

MAIN LEVEL: 1264 SQ. FT.  
 LOWER LEVEL: 805 SQ. FT.  
 TOTAL FINISHED AREA: 2069 SQ. FT.  
 unfinished area total: 451 sq ft.



• DESIGN • ELEMENTS •  
 RESIDENTIAL • LIGHT COMMERCIAL DRAFTING  
 319 • 631 • 4370  
 CHRISTINA.MAGUIRE@MSN.COM

FOR MORE INFORMATION PLEASE CONTACT:

MIKE VAN DYKE - (319)248-0532 (W)  
 - (319)631-2659 (CELL)

PRIME VENTURES CONSTRUCTION  
 CONTACT: 1  
 665-9200  
 PRIMEVENTURESONLINE.COM

**LEPIC-KROEGER REALTORS**

2346 Mormon Trek Blvd. • Iowa City, IA 52246 • (319) 351-8811