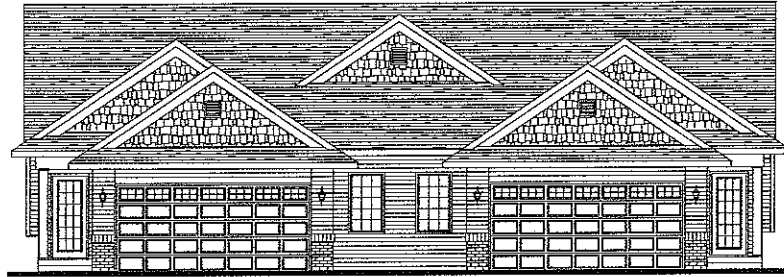




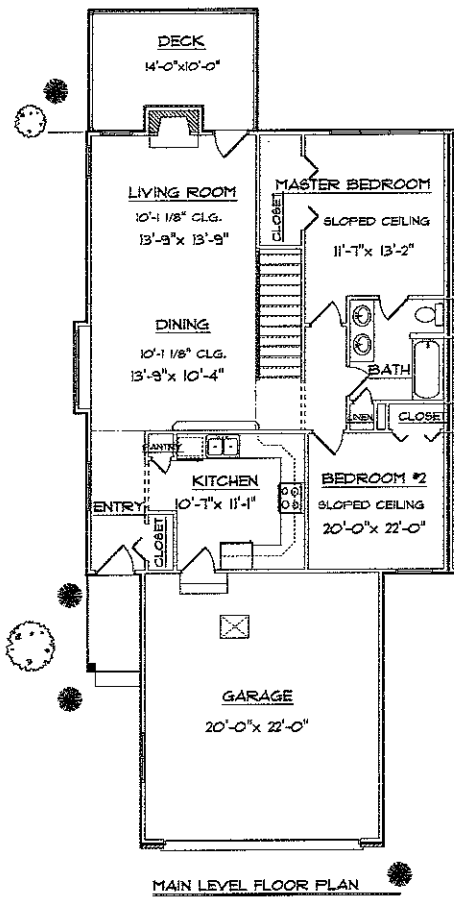
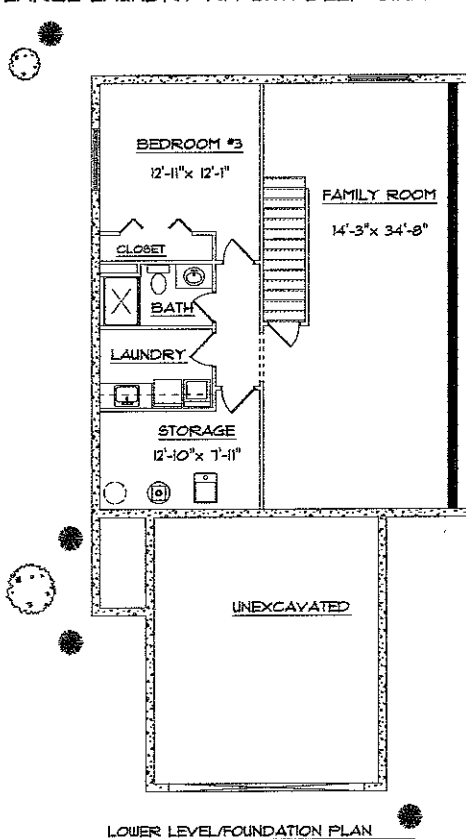
THE "SAXON" DUPLEX



3 BEDROOMS 2 FULL BATHS

MAIN LEVEL: 1080 SQ. FT.
LOWER LEVEL: 913 SQ. FT.
TOTAL FINISHED AREA: 1993 SQ. FT.

- LARGE FAMILY ROOM
- FULL FINISHED BASEMENT
- HUGE BACK YARD
- 80 FOOT LOT FRONTAGE
- AMANA APPLIANCES
- OPEN FLOOR PLAN
- SLOPED CEILING IN THE BEDROOMS
- 10' CEILING IN LIVING AND DINING ROOM
- LARGE KITCHEN WITH PASS THRU BRKFST BAR
- LIVING ROOM WITH GAS FIREPLACE
- ACCESS TO BATHROOM FROM MASTER BDRM
- 14'-0" x 10'-0" DECK OFF LIVING ROOM
- LARGE LAUNDRY RM WITH DEEP SINK



• DESIGN • ELEMENTS •
 RESIDENTIAL • LIGHT COMMERCIAL DRAFTING
 319 • 631 • 4370
 CHRISTINAMAGUIRE@MSN.COM

FOR MORE INFORMATION PLEASE CONTACT:
MIKE VAN DYKE - (319)248-0532 (W)
- (319)631-2659 (CELL)
BILL YOUNG - (319)248-0544 (W)
- (319)330-1046 (CELL)

PRIME VENTURES CONSTRUCTION
 CONTACT: MIKE MANFULL
 665-9200
 PRIMEVENTURESONLINE.COM
 mike@primeventuresonline.com

LEPIC-KROEGER REALTORS

2346 Mormon Trek Blvd. • Iowa City, IA 52246 • (319) 351-8811