



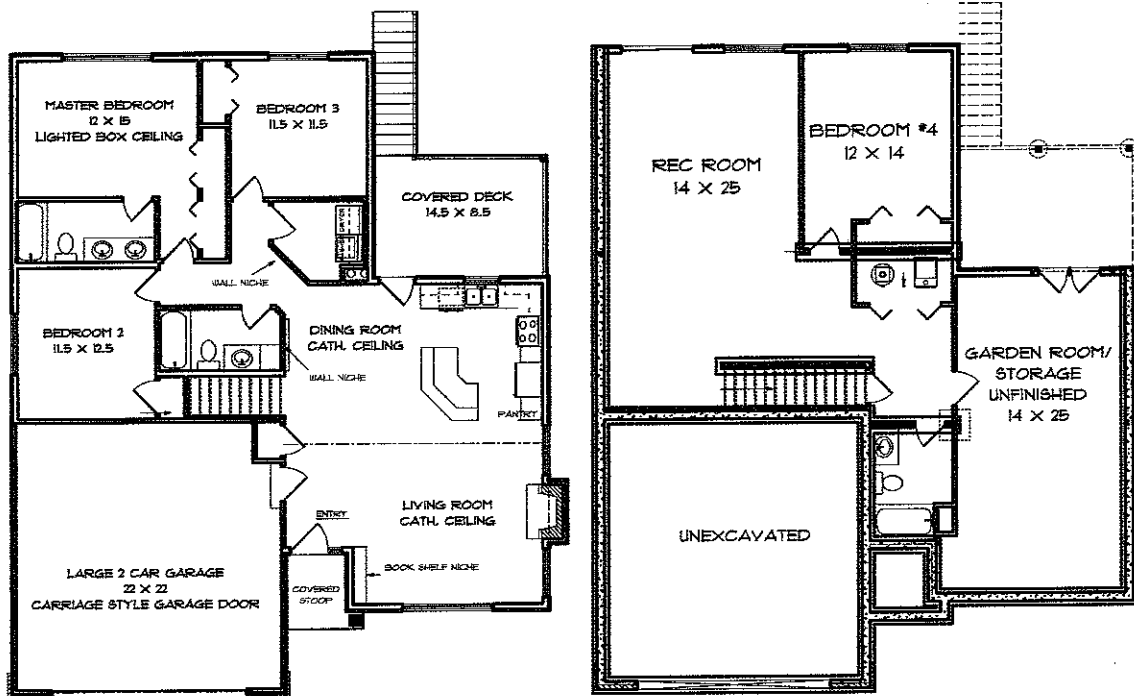
**"STRATFORD"  
RANCH  
WALK-OUT**



**4 BEDROOMS 3 FULL BATHS**

- LARGE OPEN FLOOR PLAN
- FINISHED BASEMENT
- UNFINISHED GARDEN/STORAGE ROOM
- WOODED BACK YARD
- WALK-OUT PATIO
- WALL NICHE AND BOOKSELVES
- TV NICHE ABOVE FIREPLACE
- AMANA STAINLESS STEEL APPLIANCES
- COVERED PORCH WITH STEPS TO BACK YARD
- LIGHTED BOX CEILING IN MASTER BEDROOM
- CARRIAGE STYLE ROLL-UP GARAGE DOOR W/ KEYLESS ENTRY
- EPOXY COATED GARAGE FLOOR
- CULTURED STONE FRONT
- HARDWOOD FLOORS IN KITCHEN AND DINING ROOM

**MAIN LEVEL: 1385 SQ. FT.**  
**LOWER LEVEL: 916 SQ. FT.**  
**TOTAL FINISHED AREA: 2301 SQ. FT.**



**DESIGN ELEMENTS**  
 RESIDENTIAL • LIGHT COMMERCIAL DRAFTING  
 319 • 631 • 4370  
 CHRISTINA@REDLIDER.COM

FOR MORE INFORMATION PLEASE CONTACT:  
**MIKE VAN DYKE - (319)248-0532 (W)**  
**- (319)631-2659 (CELL)**

**PRIME VENTURES CONSTRUCTION**  
 CONTACT:  
 665-5100  
 PRIMEVENTURESONLINE.COM

**LEPIC-KROEGER REALTORS**

2346 Mormon Trek Blvd. • Iowa City, IA 52246 • (319) 351-8811