

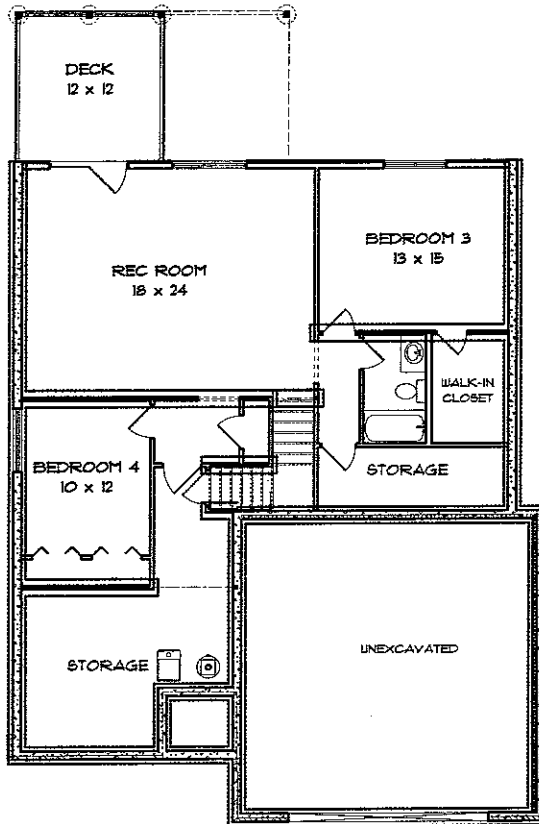


WEDGEWOOD

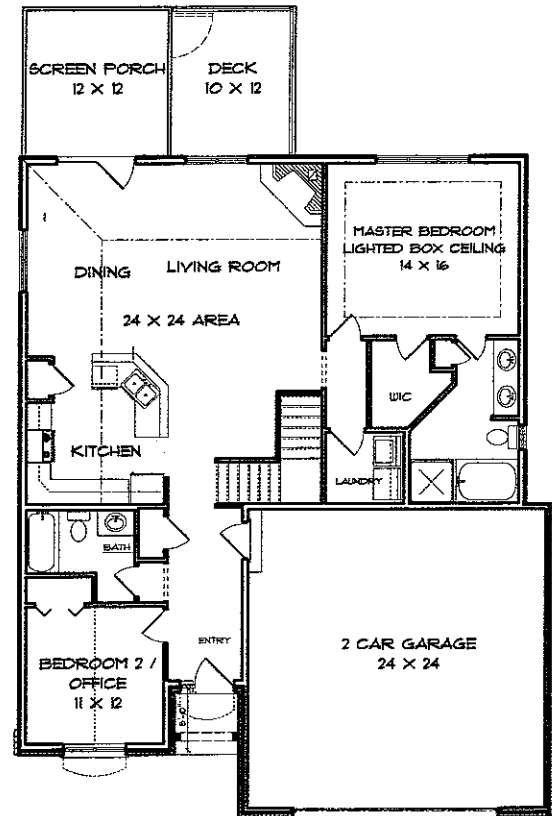


- LARGE 2 CAR GARAGE
- HUGE REC ROOM
- FULL FINISHED BASEMENT
- WALK-OUT BASEMENT OPTION
- EXTENSIVE HARDWOOD FLOORING
- AMANA STAINLESS STEEL APPLIANCES
- OPEN FLOOR PLAN
- LIGHTED BOX CEILING IN MSTR BDRM
- CATHEDRAL CEILINGS
- HUGE 4TH BEDROOM
- CEDAR DECK WITH VINYL RAILING

2 BDRMS UP / 2 BDRMS DOWN
MAIN LEVEL: 1435 SQ. FT.
LOWER LEVEL: 1041 SQ. FT.
TOTAL FINISHED AREA: 2476 SQ. FT.



LOWER LEVEL FLOOR PLAN



MAIN LEVEL FLOOR PLAN

FOR MORE INFORMATION PLEASE CONTACT:

PRIME VENTURES CONSTRUCTION
 CONTACT: MIKE MANFULL
 665-9200
 PRIMEVENTURESONLINE.COM
 mike@primeventuresonline.com

LEPIC-KROEGER REALTORS

2346 Mormon Trek Blvd.
 Iowa City, IA 52246
 (319) 351-8811