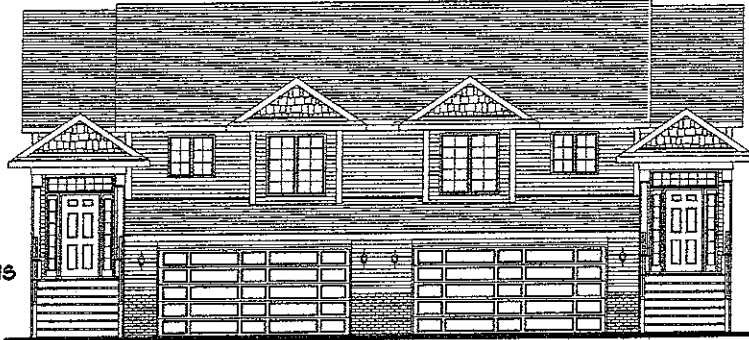


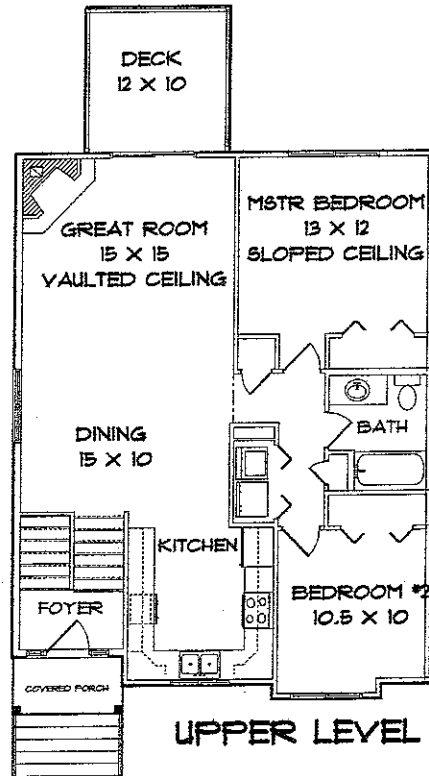
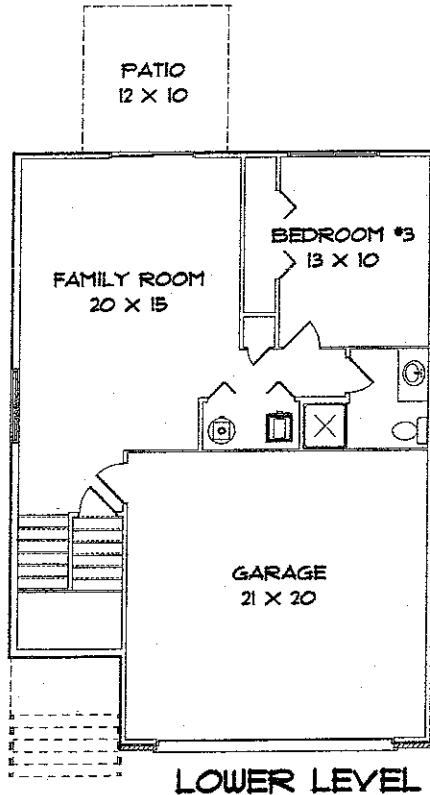
"WELLINGTON"
DUPLEX



- CATHEDRAL CEILING IN THE LIVING AND DINING
- SLOPED CEILINGS IN THE BEDROOMS
- GREAT ROOM WITH GAS FIREPLACE
- 10'x 12' DECK OFF OF GREAT ROOM
- MAIN LEVEL LAUNDRY
- SPACIOUS FAMILY ROOM
- LIGHTED PLANT SHELVES IN LIV RM AND MSTR BDRM
- CLOSE TO WATERPARK AND REC CENTER
- MAINTENANCE FREE DECK AND PORCH RAILINGS
- GREAT PRICE POINT
- NORTH LIBERTY'S NEWEST AND FINEST SUBDIVISION

3 BEDROOMS 2 FULL BATHS

MAIN LEVEL: 1036 SQ. FT.
LOWER LEVEL: 587 SQ. FT.
TOTAL FINISHED AREA: 1623 SQ. FT.



FOR MORE INFORMATION PLEASE CONTACT:

MIKE VAN DYKE - (319)248-0532 (W)
- (319)631-2659 (CELL)
BILL YOUNG - (319) 248-0544 (W)
- (319)330-1046 (CELL)

PRIME VENTURES CONSTRUCTION
CONTACT: MIKE MANFULL
665-8200
PRIMEVENTURESONLINE.COM
mike@primeventuresonline.com

LEPIC-KROEGER REALTORS

2346 Mormon Trek Blvd. • Iowa City, IA 52246 • (319) 351-8811