



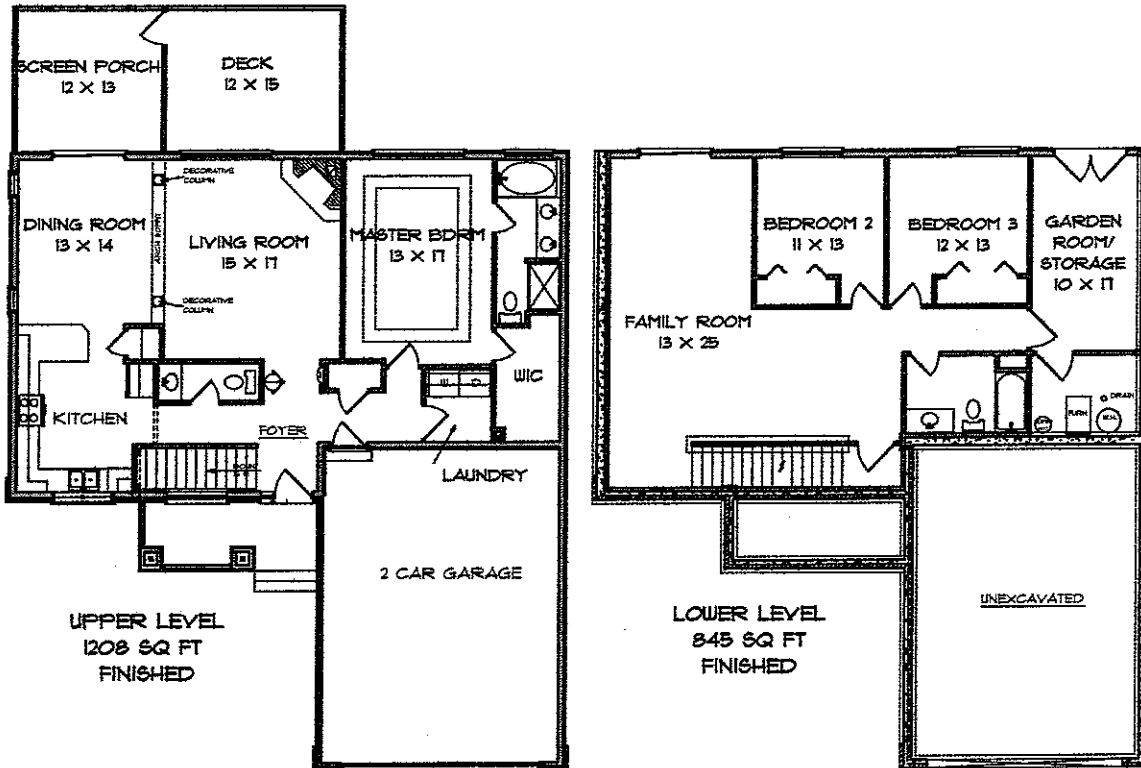
WINDHAM



- LARGE MASTER SUITE
- GARDEN ROOM
- FULL FINISHED BASEMENT
- WALK-OUT BASEMENT
- WHIRLPOOL TUB
- EXTENSIVE HARDWOOD FLOORING
- GE STAINLESS STEEL APPLIANCES
- OPEN FLOOR PLAN
- LIGHTED DBL BOX CEILING IN MSTR BDRM
- CATHEDRAL CEILINGS
- CEDAR DECK
- LOTS OF STORAGE
- STONE FRONT
- INTERIOR DECORATIVE COLUMNS

WINDHAM FLOOR PLAN

3 BEDROOM 2 1/2 BATH
 MAIN LEVEL: 1208 SQ. FT.
 LOWER LEVEL: 845 SQ. FT.
 TOTAL FINISHED AREA: 2053 SQ. FT.



FOR MORE INFORMATION PLEASE CONTACT:

PRIME VENTURES CONSTRUCTION
 CONTACT:
 665-9200
 PRIMEVENTURESONLINE.COM



GARY WATTS
 MIKE VAN DYKE
 248-0532

LEPIC-KROEGER REALTORS